

Design:

Architect design as per Vasthu.

Structure:

R.C.C. framed structure with brickwork. Brickwork will be in Solid Block or AAC Block .
Outer wall will be 8” thickness and inner wall will be 4” thickness.

Lift:

Five-passenger automatic lift with auto-rescue device (MRL Lift) (JOHNSON or EMPEROR).

Doors:

Main Door: Teak Wood design door + Protection door with Melamine Finish. (Both Frame and Door will be solid Teak wood.)

Bedroom Doors: Frame: Teak-wood Shutters: Solid Block Boards Membrane door.

Toilet:

Frame and shutters will be WPC Doors or ABS Doors – (This door are water resistant and suitable for toilets which we are using for our new projects.)

Balcony:

Frame and Door will be teak wood or UPVC. Balcony we will provide Grill for safety.

Windows: Imported UPVC Windows.(sliding type with mosquito screen – plain Glass.

Flooring:

Living / Dining, Bedroom and Kitchen – 2’0” x 2’0” Vitrified Tiles. Toilet flooring – Anti skid Ceramic Tiles and Concept Design Tiles for Wall up to ceiling. (Johnson or Kajaria tiles).
Staircase with Granite and Stainless Steel Handrails.

Kitchen:

Granite Top with Stainless Steel Sink with drain board and side Patty (Easily Washable Tabletop)
Design Tiles above kitchen top up to 2’0” height.

Electrical:

Three-phase supply with phase change-over, Modular Switches for entire flat, two-way light, Fan Point and Split A.C. Point in all bedrooms and living room, Earth-leak circuit breaker (protects electrical & electronic instrument and provides human safety).(Brand – Havells or equivalent).

Painting:

Inner wall: Two Coats Alltek Putty, One coat Primer and Two coats Asian Emulsion Paint.
Grills and Main gates : 1 coat primer and 2 coats of Asian Enamel paint.
Outer walls : 1 coat primer and 2 coats of Exterior Emulsion paint.

Bath Fittings:

Jaquar (CP) Fittings, wall-mixer in all the toilets & health faucet provision as per builder’s choice.

Sanitation:

EWC Cascade Closet (wall mounting) Parryware and Hindware make, Washbasin light colours (Parryware or Hindware make) Concealed Flush Tank (Getbrid or equivalent)
Pressure Pump Motor will be provided (Grundfos make)

Sump & Overhead Tank :

Sump:12000 litres Concrete sump with suitable sump motor.
Overhead Tank : 4000 litres for sump water and 2000 liters for Bore water. With suitable motor. Sump for bore well -6000 Litres with suitable motor.

Weathering course:

Weathering course will be done with White roof tiles.

Pest Control: Anti-termite Treatment.

Parking: Reserved Covered Car-parking.

Security & Safety:

Security Alarm System – Home Series. Video Door Phone.

Generator: Back –up Generator for Common Areas and Lift (Kirloskar make) For all flats we will Provide

Genset Power backup for Fan, Light and 5 Amps Plug Point.

Compound Wall: Height of Compound wall will be 5 feet from Car parking floor level. Thickness 4” - Hollow Block

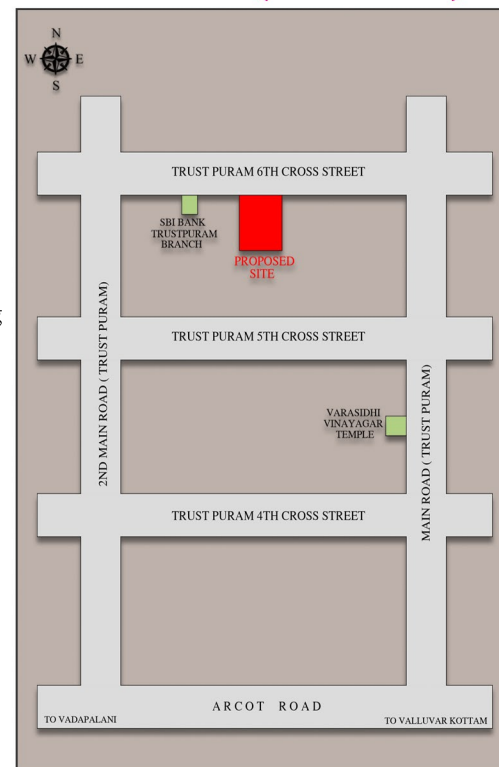
Rainwater harvesting: Rainwater from terrace will be done.

Camera: CCTV Camera will be provided

SPECIFICATION :



KEY PLAN (Not to Scale)

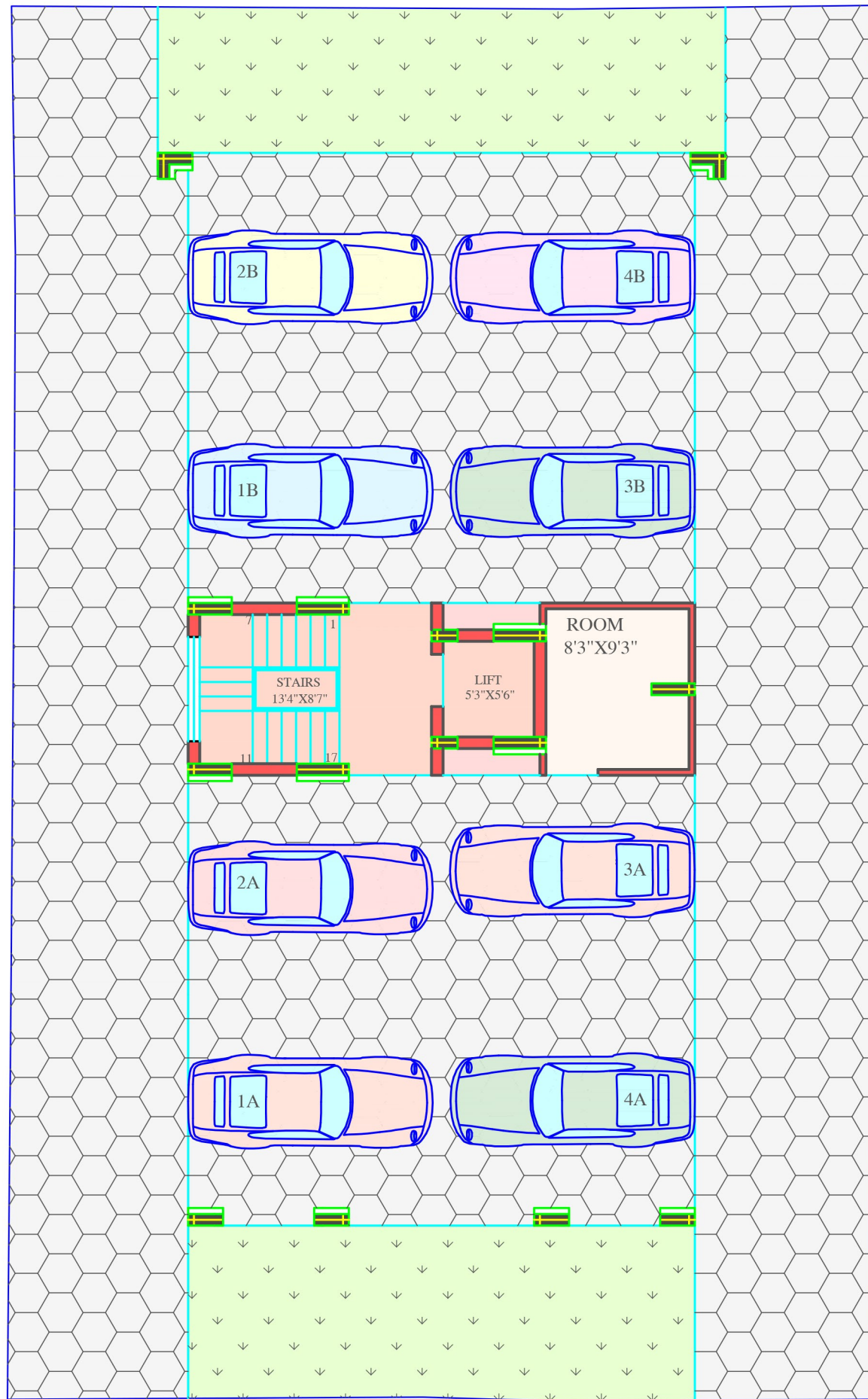


BHUVANESHWARI CONSTRUCTIONS (P) LTD.

An ISO 9001 : 2015 Certified
No. 24, First Main Road, Kannan Nagar, Madipakkam, Chennai - 600 091
Phone : Off : 044 - 2224 0903, 2224 0904, 2224 8870
Marketing : 98410 43410 / 98413 43410
Email : admin@bcplindia.in
www.bcplindia.in

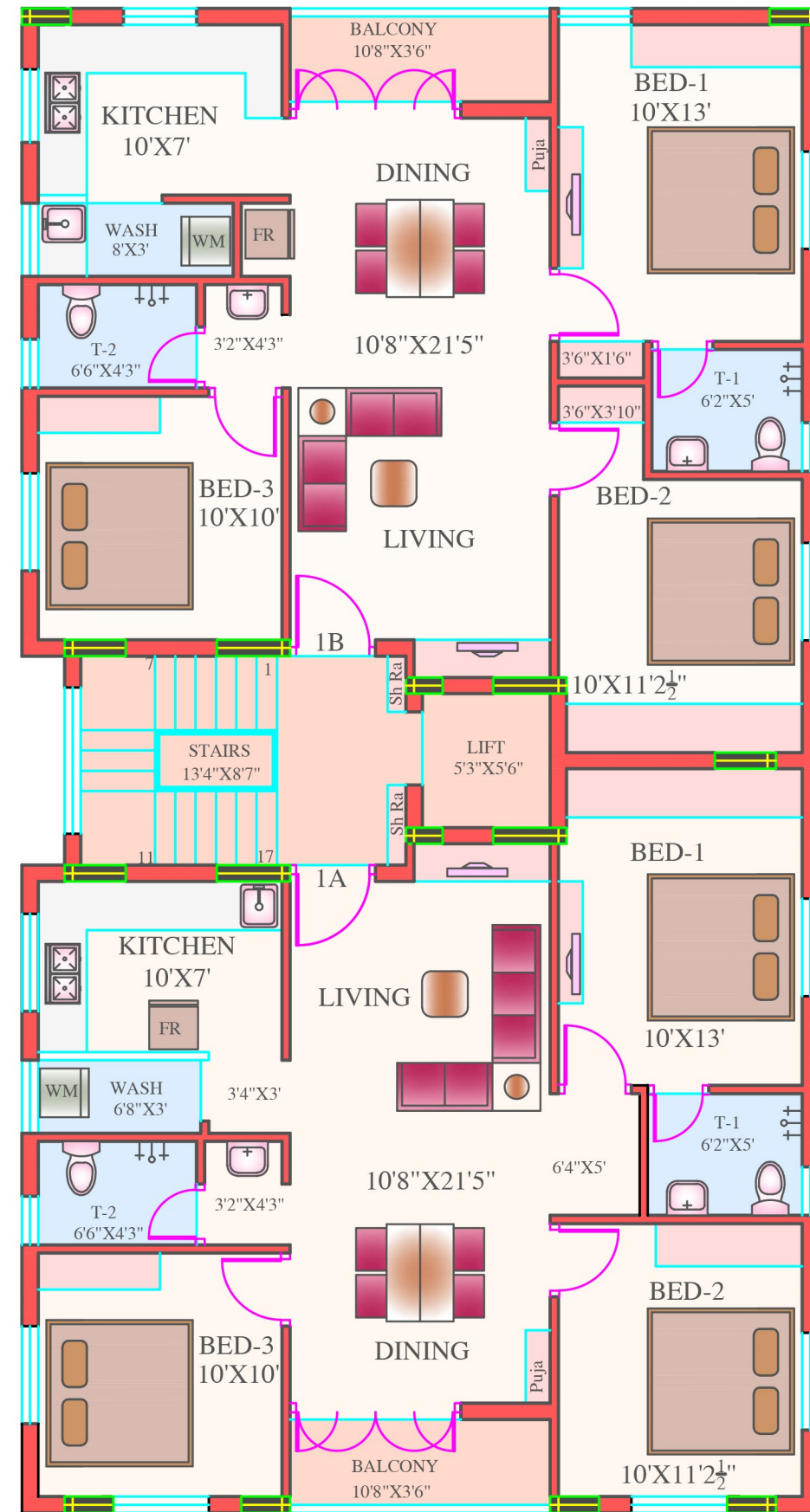
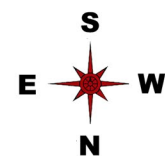
PREMIUM APARTMENTS @

Door No.29/14, 6th Cross Street, Trustpuram,
Kodambakkam, Chennai - 600 024.



40'0" WIDE ROAD 6th St

STILT FLOOR PLAN



TYPICAL FLOOR PLAN

STILT + FOUR FLOOR

3 BHK - 1147 SQ.FT.

